



COLAB SAN LUIS OBISPO
WEEK OF SEPTEMBER 10 - 16, 2017



COLAB
San Luis Obispo County

FALL FORUM
SAVE THE DATE



Thursday, October 12, 2017

5:30 PM — 7:30 PM

At the Holland Barn
2275 Carpenter Canyon Rd.
San Luis Obispo

WHAT CAN BE DONE TO SAVE CALIFORNIA

Guest Speaker

DAN WALTERS

THIS WEEK

**ECONOMIC DEVELOPMENT EFFORTS ARE
KEY FOCUS OF AGENDA**

LAST WEEK

**NO BOARD OF SUPERVISORS MEETINGS ON
AUGUST 29TH OR SEPTEMBER 5TH**

ROUNDBOUTS IN YOUR FUTURE

SLO COLAB IN DEPTH

(SEE PAGE 10)

**PROGRESSIVE POLITICAL AND CULTURAL ELITES
ARE PISSING ON YOU**

By Mike Brown

LINGUISTIC MCCARTHYISM

By Victor Davis Hanson

THIS WEEK'S HIGHLIGHTS

Board of Supervisors Meeting of Tuesday, September 12, 2017 (Scheduled)

In General: Items 2, 8, 21, and 22 on this week's agenda relate to economic development. They do not represent new policy initiatives, but rather, are legally required implementing actions to carry out previously approved and budgeted programs.

Time to Update Policy? The County's economic development strategy was developed by the independent not-for-profit business led Economic Vitality Corporation and was originally adopted by the Board of Supervisors in 2009. It was updated and readopted in 2015.

The overall strategy is stated as:

The San Luis Obispo Economic Vitality Corporation and Economic Strategy Clusters envision San Luis Obispo continuing growth in a number of key industry sectors; expanding its pool of talented professionals through higher education, and retention and recruitment; expansion of workforce housing; establishment of key technological and public works infrastructure; while conserving and preserving the County's environmental and cultural heritage.

An underlying theme of the Economic Strategy is to advocate for and create economic development within the County to enhance the economic vitality of the County. This will facilitate creation of head of-household jobs, enable expansion of businesses, enable attraction and retention of professionals, and allow for funding of needed infrastructure and other critical public services.

The actual strategy is to promote growth within 6 groupings of industries which the plan labels as "clusters." The six clusters include:

1. The Building Design and Construction Cluster comprised of architectural & engineering services, building construction, building equipment and finishing, foundation, structure, & building exterior contractors, heavy & civil engineering construction, land subdivision, utility system construction and roadway & bridge construction.

2. The Energy Cluster made up of generation, recovery transmission, distribution, and technical services, heating and air conditioning, and any other existing or emerging sectors involved in the energy industry.

COLAB NOTE: The oil and gas industry is conspicuously absent from this cluster even though it constitutes a major local value added industry and has vast future potential. The County Board majority did not support oil and gas at the time this policy goal was adopted. In the meantime the county rejected the Phillips 66 tank car project.

The County instead supported government subsidized and property tax exempt solar farms with tiny permanent work forces and which cover thousands of acres of land that has otherwise been praised as containing more listed and endangered species than any other place in the State.

Worse yet, and since the plan was adopted, Pacific Gas and Electric has announced the closure of the Diablo Nuclear Power Plant, which generates about 10% of all the electricity

used in California. Additionally, the plant creates about \$950 million in annual economic activity in San Luis Obispo County and northern Santa Barbara County. The EVC is slated to lead a study of how the region should deal with the impending negative economic impacts.

3. The Health Services Cluster including home health care services, elderly community care facilities, medical & diagnostic laboratories, outpatient care centers, acute care hospitals, doctor's offices, dentist's offices, ambulatory services, and biosciences and medical products.

4. The Knowledge & Innovation Services Cluster made up of a range of businesses including computer systems design, software publishers, colleges, universities & professional schools, advertising services, and printing services, as well as general professional, scientific, management and technical services.

COLAB NOTE: Several companies have expanded into new facilities in the last several years. What is the total picture in terms of sq. footage, jobs, payroll, and property taxes for this cluster?

5. The Specialized Manufacturing Cluster containing aerospace product manufacturing, basic & agricultural chemical manufacturing, electrical equipment manufacturing, medical equipment & supply manufacturing, pharmaceutical manufacturing, transportation & navigation equipment manufacturing, agricultural & construction machinery manufacturing, plastics & rubber manufacturing, motor vehicle & parts manufacturing, metalwork manufacturing, and cement & concrete manufacturing.

6. The Uniquely SLO County Cluster including aquaculture, floriculture production, vegetable farming, cattle ranching, fruit & nut farming, olives and olive oil, walnut oil, animal processing, and wine and beer production. As well as recreation and accommodation such higher-value food and drink establishments, traveler accommodations, and amusement & recreation industries.

COLAB NOTE: There seems to have been substantial expansion in this cluster over the past few years. What are the numbers? What is to be the economic role of legalized recreational marijuana in terms of cultivation, refining, distribution, wholesale, and retail?

New Board of Supervisors Majority: Should the new Board of Supervisors Majority revisit the overall strategy? Two members are on the EVC Board of Directors.

Item 2 - Approval of Contract for Tourism Promotion. The County is to approve a contract between the San Luis Obispo County Tourism Business Improvement District (CBID), and Mental Marketing Inc. and TJA Advertising in the total amount of \$755,000 to provide marketing services for FY 2017-18.

The CBID is funded by a 2% assessment of the rent charged per occupied room per night from lodging businesses (hotels, motels, bed and breakfasts, and vacation rentals) within the CBID. The agreement with Mental Marketing Inc. and TJA Advertising will be funded completely out of those assessments and no County General Fund dollars will be used. During the term of this

amendment, Mental Marketing Inc. and TJA Advertising will be paid a total of \$755,000 in FY 2017-18 to provide the services as outlined in the scope of work attached.

The work program can be accessed at the link below:

<http://agenda.slocounty.ca.gov/agenda/sanluisobispo/7794/Q01UIFNjb3BlIEZpbmFsIDE3LTE4LnBkZg==/12/n/82442.doc>

Item 8 - Airline Leases for New Terminal. The new terminal is slated to open in November. Accordingly, it is necessary to end the leases at the old terminal and provide new leases. Rates for landing fees, space rental, gate parking, and so forth are raised slightly in recognition that the new terminal is much larger than the old terminal and operating and maintenance costs are proportionately higher.

The good policy news is that the new terminal will promote flying local as opposed to going to LAX or SFO. The more people who fly local, the greater the chance that the airlines will add flights to existing and new destinations. A flight to Denver was added earlier this year, improving connections to the east. Service was also added to Seattle. Better and more frequent connections are important for economic development of high tech, manufacturing, entertainment software, and hospitality businesses, which lie at the core of the County's economic development strategy.

San Luis Obispo County Regional Airport Enplanement Trends

<i>Fiscal Year</i>	<i>Q1</i>	<i>Q2</i>	<i>Q3</i>	<i>Q4</i>	<i>Cumulative</i>	<i>% Change</i>
2007-08	51,343	48,784	38,794	43,364	182,285	NA
2008-09	42,697	32,566	26,866	30,619	132,748	-27.2%
2009-10	32,968	30,873	27,645	33,666	125,152	-5.7%
2010-11	36,301	36,128	30,496	36,984	139,909	11.8%
2011-12	35,631	34,493	30,185	33,935	134,244	-4.0%
2012-13	35,457	31,850	30,354	34,654	132,315	-1.4%
2013-14	36,753	36,224	34,528	39,600	147,105	11.2%
2014-15	40,345	38,356	35,567	35,290	149,558	1.7%
2015-16	35,617	40,295	36,546	43,286	155,744	4.1%
2016-17	43,414	42,501	39,789	54,437	180,141	15.7%

Item 10 - Annual Property Tax Rate Setting Resolution. This is an annual ministerial action in which the Board of Supervisors is required to formally set the property tax rate. The rate is generally capped at 1% of the assessed value of the property. Exceptions are allowed when the voters approve tax rate overrides for bonds or other purposes.

The real policy issue here is that there are many legislators and interest groups working assiduously to abolish or weaken Proposition 13 protections. Constant vigilance is required.

Voters should carefully question candidates for all offices about their stance on protecting Proposition 13 in total. We visited a property in San Francisco where various city and school district overrides have combined to jump the rate to 1.45%. Thus the taxes on a very modest 2 bedroom \$895,000 condo are \$12,977 per year. Take a look at the current SLO County rates in the table below, and then imagine what could happen if the left progressives get even more control and reduce the existing protections.

EXHIBIT 1

**COUNTY OF SAN LUIS OBISPO
BOARD OF SUPERVISOR APPROVED
SCHEDULE OF TAX RATES
2017/2018**

<u>FUND</u>	<u>TAXING AGENCY</u>	<u>CURR YEAR 2017/2018 TAX RATE</u>	<u>PRIOR YEAR 2016/2017 TAX RATE</u>
COUNTYWIDE TAX RATES			
0013	PROPOSITION 13 BASIC TAX RATE	1.00000%	1.00000%
0110	UNITARY PIPELINE RIGHTS OF WAY State Assessed	1.00000%	1.00000%
0112	UNITARY RAILROAD TAX RATE State Assessed	1.00000%	1.00000%
0113	UNITARY PROPERTY TAX RATE State Assessed	1.00000%	1.00000%
<u>CONTRACT</u>			
0646	STATE WATER BOND	0.00400%	0.00400%
<u>DEBT SERVICE</u>			
0114	UNITARY DEBT SERVICE	0.11952%	0.11537%
INCORPORATED CITIES AND SPECIAL DISTRICT BONDS			
1042	LOPEZ DAM RETROFIT - 2011 Refunding of 2000	0.00732%	0.00882%
1100	GROVER BEACH ROAD - 2014 Series A & B New Series B	0.05135%	0.03431%
1125	CITY OF PASO ROBLES - 1999	0.05160%	0.05160%
SCHOOL DISTRICT GENERAL OBLIGATION BONDS			
<u>DEBT SERVICE</u>			
1233	TEMPLETON UNIFIED - 2012 Series A & B	0.05800%	0.05800%
1236	SAN LUIS COASTAL USD - 2014 Series A	0.04900%	0.04900%
1249	LUCIA MAR USD - 2005 A & B Rfndg of 1997 A	0.01634%	0.01634%
1251	LUCIA MAR USD - 2006 A Rfndg of 2004 A	0.02360%	0.02360%
1252	LUCIA MAR USD - 2016 A	0.04200%	0.00000%
1276	ATASCADERO UNIFIED - 2010 Series A & B	0.05900%	0.05900%
1277	ATASCADERO UNIFIED - 2014 Series A	0.05904%	0.05900%
1304	CUESTA COMM COLLEGE - 2014 A & A1	0.01925%	0.01925%
1512	CAYUCOS ELEM - 2014 Rfndg of 2004 A	0.01760%	0.01760%
1514	CAYUCOS ELEM - 2016 Rfndg of 2006 A & 2004 B	0.01790%	0.01790%
1520	CUYAMA JOINT UNIFIED - 2016 A Rate Set by SB Co.	0.05982%	0.00000%
1524	SANTA MARIA/BONITA JT UN -2014 A Rate Set by SB Co.	0.02575%	0.02575%
1525	SANTA MARIA JT HSD - 2000 Rate Set by SB Co.	0.02391%	0.02517%
1526	SANTA MARIA JT HSD - 2004 Rate Set by SB Co.	0.02523%	0.02426%
1528	SANTA MARIA JT HSD - 2016 A Rate Set by SB Co.	0.02950%	0.00000%
1534	HANCOCK CCD - 2014 Rfndg 2006 A & B Rate Set by SB Co.	0.02375%	0.02500%
1545	SHANDON UNIFIED - 2016 A	0.06000%	0.00000%
1548	COAST UNIFIED - 2011A Refunding of 1998A	0.00664%	0.00664%
1549	SAN MIGUEL ELEM - 2000 Series A	0.04413%	0.04413%
1550	COAST USD IMP DIST #1 - 2011A Rfndg of 2002 A & B	0.03210%	0.03210%
1559	SAN MIGUEL ELEM - 2016 A	0.02855%	0.00000%
1570	PASO ROBLES UNIFIED - 2006A, 2010 A & B	0.01190%	0.01190%

Item 21
-
Annual

Economic Vitality Corporation (EVC) Contract Renewal. The EVC is the County's contract not-for-profit economic development agency. Through an elaborated process, it has developed a County Economic Development Strategy and has worked heavily on obtaining the direct air service to Denver noted in Item 8 above.

It will lead the effort to plan for the economic impacts of the closure of the Diablo Nuclear Power Plant.

This contract provides the EVC's base County contribution of \$148,775 per year, which is matched by others. The EVC also receives contributions from the private sector. The large Diablo pre-closure effort is expected to be funded by PG&E from its closure "Joint Proposal" package. That package is subject to California Public Utilities Commission rate setting proceedings which are currently underway.

To see the EVC's accomplishments and plans, go to the link:

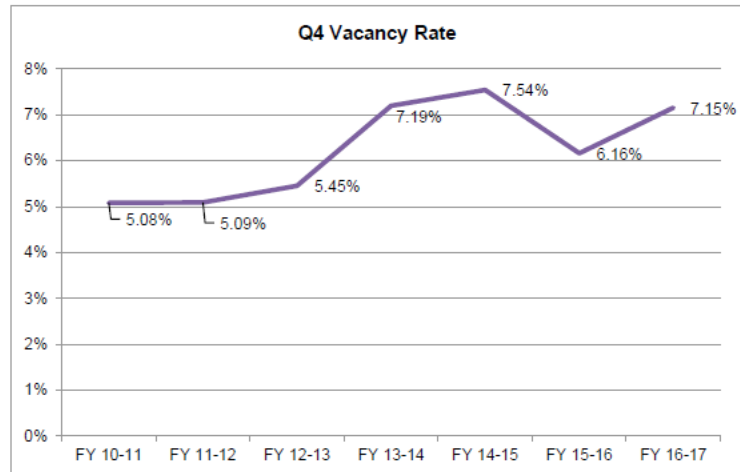
<http://agenda.slocounty.ca.gov/agenda/sanluisobispo/7759/RmluYWwgRVZDIFN0YXR1cyBSZXBvcnQgSnVseSAyMDE3LnBkZg==/12/n/82036.doc>

Item 22 - Renewal of Cal Poly Center for Innovation and Entrepreneurship Hot House Economic Development program. This is an economic development incubator program which assists new businesses to get started. The county contributes \$200,000 per year. To see the programs accomplishments for 2016 go to the link:

<http://agenda.slocounty.ca.gov/agenda/sanluisobispo/7757/Q2FsIFBvbHkgMjAxNiBQcm9ncmVzcyBSZXBvcnQgdG8gU0xPIENvdW50eSBvZSBTTE8gQ291bnR5IEdyYW50IChmaW5hbCAxMi4yOC4xNikgKDEpLnBkZg==/12/n/82019.doc>

Item 35 - Fiscal Year 2016 -17 4th Quarter/Full Year Financial Report. The County ended the fiscal year with lower expenditures than projected and more revenue, adding to its surplus and reserves. A key factor on the income side is higher property tax revenue than had been budgeted. On the expenditure side, departments underspent their operating budgets, largely due to carrying employee vacancies. While the County continues to add permanent staff positions, many remain vacant due to turnover, the ponderous slow government hiring process, and difficulty attracting some position classes such as psychiatrists and deputy sheriffs. It is possible that housing costs may be a factor. More than several employees have expressed dismay about the housing situation and the increasing inability to maintain a family in SLO County.

Summary of Position Allocation Changes				
Full Time Equivalent (FTE)	Q1	Q2	Q3	Q4
Quarter Start	2,710.50	2,738.75	2,743.25	2,747.50
FTE Additions	48.25	17.50	6.25	8.00
FTE Deletions	20.00	13.00	2.00	4.00
Quarter End	2,738.75	2,743.25	2,747.50	2,751.50
Net Change	+28.25	+4.50	+4.25	+4.00
% Change	+1.04%	+0.16%	+0.16%	+0.15%



Expense and Revenue at Year-End

	FY 2015-16	FY 2016-17
All Funds:		
Expenditures	\$547.4M (81%)	\$549.4M (81%)
Revenue	\$556.9M (91%)	\$576.5M (93%)
General Fund Only:		
Expenditures	\$428.9M (89%)	\$461.5M (89%)
Revenue	\$438.5M (97%)	\$455.3M (96%)

Departments with Significant General Fund Savings

Department	Unspent GFS compared to budget	
County Fire	\$1,936,696	-12%
Public Works	\$1,515,125	-20%
Planning and Building	\$1,443,868	-16%
Health Agency*	\$817,141	-4%
District Attorney	\$539,375	-6%
Social Services	\$531,472	-6%

LAST WEEK'S HIGHLIGHTS

No Board of Supervisors Meetings on Tuesday, August 29 or Tuesday September 5, 2017 (Not Scheduled)

August 29th was a 5th Tuesday. The Board does not generally schedule meetings on the 5th Tuesdays of the month. There was no Board meeting on Tuesday, September 5th as it was a day after a holiday (Labor Day), when meetings are not normally scheduled. There will be 3 meetings on the subsequent Tuesdays in September.

Background - Coming “Attractions”: Including the September meetings, there are 10 meetings remaining in 2017 between now and the December recess. Significant issues that will probably come up in this period include:

Appointment of a County Administrative Officer

Appointment of a Planning Director

Appointment of an Air Pollution Control Officer (APCO), who is the Director of the APCD

The future of the Housing-in-Lieu Fee (actually a tax), which the progressive left seeks to preserve and expand

Concurrently there is likely to be reporting on the status of previous assignments by the Board to the staff relative to increasing the supply of housing in the County.

Also it is expected that the state legislation will be adopted encouraging cities and counties to allow more housing and restricting some of their ability to deny projects. It is also likely that the state will adopt new Legislation imposing new fees and taxes to generate revenue for subsidized “affordable” housing.

The Public Utilities Commission (PUC) decision on the PG&E’s rate increases in connection with the closure of the Diablo Nuclear Power Plant and consequent decision by PG&E on whether to extend the plant to 2025 or close it as soon as possible

Government takeover of electrical energy distribution through the so-called Community Choice Aggregation Program

A decision by the County on whether to relinquish its control of groundwater management in the area to be controlled by the formation of the Estrella-El Pomar-Creston Management Water District in the Paso Basin

Annual Fee Increases for the ensuing fiscal year

Potential California Coastal Commission intervention in the Oceano Dunes dust issue (at its September meeting)

The results of the current FBI investigation into the Andrew Holland jail death

Further actions by the Board of Supervisors related to jail, health department, mental health department, and general management issues related to:

Currently filed or impending lawsuits on other jail deaths and other alleged instances of prisoner mistreatment

Broader concerns about the mental health system and services

Adoption of ordinances regulating the cultivation, processing, distribution, and sale of recreational marijuana

Planning Department proposed work program for FY 2017-18

California Water Fix (Twin Tunnels) – impact on Ag and future water costs

So-called “Chumash Heritage” Marine Reserve

San Luis Obispo County Council of Governments (SLOCOG) Meeting of Wednesday September 6, 2017 (Completed).

A – 1 – Roundabout Presentation. Notwithstanding that there is considerable public opposition to the installation of roundabouts, the Federal Government and Caltrans are pushing them on local communities throughout the state. SLOCOG received a full bore presentation on the presumed advantages. The key message was, “even though your constituents don’t like them, you County Supervisors and city councilors need to get educated so you can promote them yourselves.” Reportedly a swarm of Federal and State officials have scheduled individual meetings with councilmembers and Supervisors to further sell the scheme.

It is asserted that they are less costly to build and operate than signalized intersections and that they are safer in terms of having fewer collisions, less injury accidents, and deaths than traditional signalized intersections. It is also asserted that they are traffic “calming”, whatever that means.

The problem is that they slow traffic and are confusing to people from out of the area. Unlike traffic signals, they cannot be linked to computers which can regulate and optimize traffic in sequence from intersection to intersection to provide a smooth flow. Instead of proceeding at an even 35 miles per hour down a major arterial, you have to slow down to 15 or 25 miles per hour to navigate roundabouts.

It turns out that fairly detailed schematic plans have been prepared by SLOCOG for a number of locations per the map below.

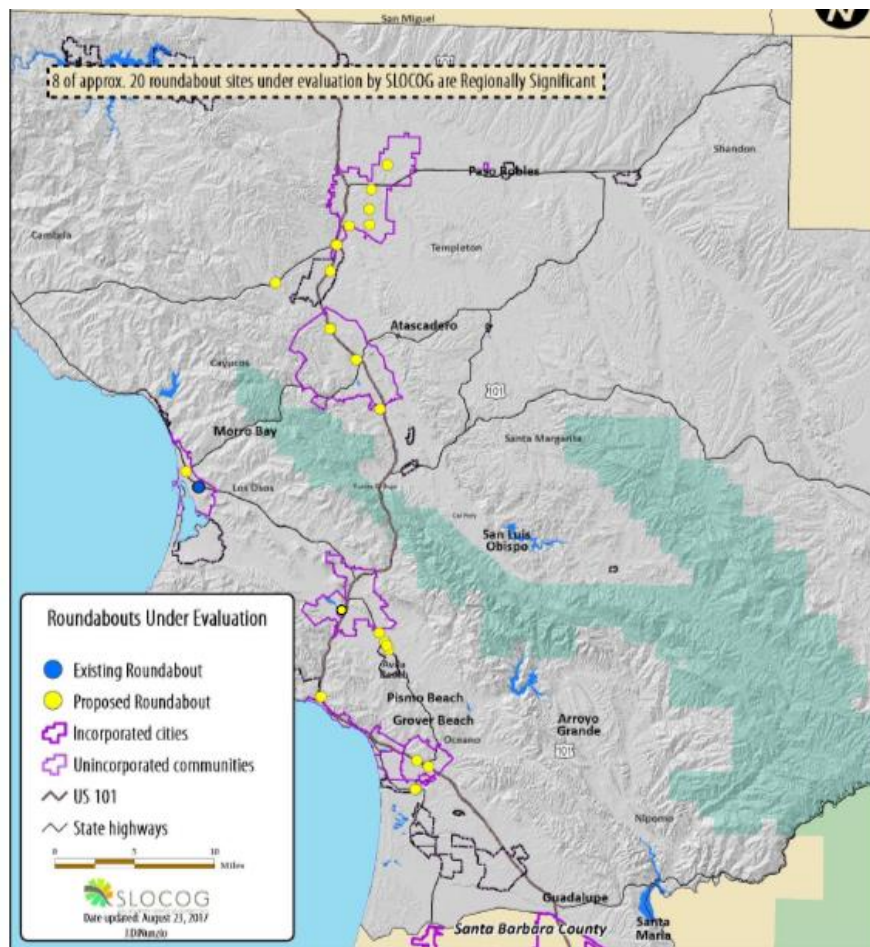


Figure 13: Locations of Proposed Roundabouts Under Evaluation 2017/18

Of course they are also touted as helping to reduce climate change because cars spend less time idling at red lights.

COLAB IN DEPTH

IN FIGHTING THE TROUBLESOME, LOCAL DAY-TO-DAY ASSAULTS ON OUR FREEDOM AND PROPERTY, IT IS ALSO IMPORTANT TO KEEP IN MIND THE LARGER UNDERLYING IDEOLOGICAL, POLITICAL, AND ECONOMIC CAUSES AND FORCES

PROGRESSIVE POLITICAL AND CULTURAL ELITES ARE PISSING ON YOU

By Mike Brown

The recent furor over the destruction of Confederate war memorials is a reminder that public art has serious meaning and can profoundly affect the feelings of people, both when it is originally commissioned and later upon our collective memories, even after hundreds or thousands of years.

A civilization's monumental public art and architecture summarize its values, moral aspirations, and historical achievement. Egyptian monuments and painting, classical Greek sculpture, Gothic cathedrals, the Alhambra Palace, Mesoamerican pyramids, 20th Century suspension bridges, and even the fanciful Santa Barbara County Courthouse provide testimony about what people were thinking as well as their level of technical and artistic development.



Two Examples: What do Berkeley's "Guardian" and Orange County's "Bad Dog" sculptures tell us about aspirations and taste in contemporary California?

The "Guardian" sculpture commands the prominent terminus of a divided landscaped boulevard at the western end of the City's University Avenue and points to the Golden Gate Bridge and San Francisco skyline across San Francisco Bay – one of America's most iconic views.

The Guardian – Berkeley Marina Park - was installed in the 1980's without the



City's permission. It remains an example of the "plop art" movement, which is art that is anonymously installed at night on public property without approval. When it rains, water enters the mouth of the creature and is then piped to the statue's penis, where it simulates an animal peeing. Berkeley politicians cherish the statue and maintain it.

More recently, and with official support, the "Bad Dog" sculpture was installed at the Orange County Museum of Art in 2013 - and yes, he is peeing on the Museum.

Suffice to say these monuments pretty accurately sum up what California's dominant political classes and cultural elites think of our civilization and those conservative citizens who celebrate traditional values. That's right - "piss on you."



A Contrasting Example - What About General Sherman's Statue?



General William Tecumseh Sherman Memorial NYC, @1900

Sherman is being led by the Goddess of Victory. Note the decline in skill, refinement, and taste that have occurred over the past 100 years. Notwithstanding the invention of iPhones and penicillin, from both a cultural anthropological point of view and an archeological point of view (how artifacts show social and historical changes), the difference between the Sherman statue and the two modern examples visited above, evince the general decay of society during a very short interval, when considered on a historical basis.

If 2000 years from now archeologists were to uncover these 3 statues, with little else to go on, what would they conclude about the state of society over the 100 year period which elapsed from the creation of the Sherman statue to the Guardian? They might theorize that some horrible plague or other calamity had caused such a sudden and major regression and decay.

Sherman was instrumental in defeating the Confederacy. He severed the southeastern Confederacy and burnt the cities of Atlanta and Columbia. He was an advocate of total warfare – that is not only destruction of the enemy's military assets, but also his industrial and economic ability to wage war. Sherman systematically destroyed plantations (many a southern matron's silver became heirlooms in northern dining rooms), towns, railroads, bridges, and factories, severely crippling not only the Confederacy's ability to wage war but its peoples' will as well.

Although a Union hero, in contrast to Confederate General Robert E Lee, Sherman also expressed very strong and well-documented racist views in both speeches and writings. Wonder if this statue is coming down? Often, and throughout history, it is those who were defeated, whose monuments are purged from history. What of the victors? In any case, both will be pissed on.



SHERMAN BURNS GEORGIA AND FREES SLAVES

Mike Brown is the Government Affairs Director of the Coalition of Labor Agriculture and Business (COLAB) of San Luis Obispo County. He had a 42-year career as a city manager and

county executive officer in 4 states including California. He can be reached at mike@colabslo.org.

Linguistic McCarthyism

By Victor Davis Hanson

Most Americans recoil from the statue-smashers and name-changers. ‘The Bard,’ William Shakespeare, had a healthy distrust of the sort of mob hysteria typified by our current epidemics of statue-busting and name-changing. In Shakespeare’s tragedy *Julius Caesar* — a story adopted from Plutarch’s *Parallel Lives* — a frenzied Roman mob, in furor over the assassination of Julius Caesar, encounters on the street a poet named Cinna. The innocent poet was not the conspiratorial assassin Cinna, but unfortunately shared a name with the killer.

The terrified poet points out to the mob this case of mistaken identity: “I am Cinna the poet.” The mob answers: “Tear him for his bad verses, tear him for his bad verses! . . . It is no matter, his name’s Cinna!”

Shakespeare certainly would recognize that, like the playwright’s Roman mob, we have launched a war against words in our frenzy to find targets for our politically correct madness. Recently, there were progressive calls at the University of Southern California to rename the school’s mascot, the white Andalusian horse “Traveler.” Members of the Left thought that the mute animal’s name too closely resembled the name “Traveller,” the favorite horse of Confederate general and sudden demon of 2017 Robert E. Lee. But the mob was not finished there. An Asian-American sportscaster named Robert Lee was recently yanked by the sports channel ESPN from broadcasting a University of Virginia football game. Apparently, Lee’s name was too close to that of Robert E. Lee.



Nearly a century and a half after his death, General Lee has gone from tragic figure to Public Enemy No. 1 of the Left. Lee the sportscaster, like Cinna the poet, was found guilty on the basis of ignorant association with his name. If the politically correct herd could not get its hands on the long-dead Robert E. Lee, it would apparently settle for anyone in the present who shared nearly the same name.

Why would a supposedly civilized country descend into such linguistic fascism? Part of the problem is the presumption by elites that a supposedly illiterate public must be protected from itself. But does anyone really believe that average people will confuse an Asian-American sportscaster who has the common Chinese surname “Lee” and the all-American first name “Robert” with a Confederate general — or that the sportscaster could thus be somehow tangentially connected with the recent violence in Charlottesville? ESPN, however, does not bet on the intelligence of the average American. It prefers to virtue-signal that it is above all suspicion of sympathy for the Confederacy. In its search for cosmic justice, it cares little about the injustice it metes out to real live people. ESPN has long politicized sports and continues to lose viewers over its adolescent political correctness.

Not long ago, the network fired tennis commentator Doug Adler. He had characterized the aggressive play of tennis star Venus Williams as employing the “guerrilla effect.” (“And you’ll see Venus move in and put the guerrilla effect on, charging,” Adler had said.) Adler’s reference was drawn from the once-popular term “guerrilla tennis” that denoted a tough, brawling, take-no-prisoners style from the 1990s. The word “guerilla,” remember, is a diminutive of the Spanish word guerra (“war”). In Spanish, guerrilla means “little war.” In English, “guerilla” is commonly used to describe a type of unconventional fighting. But Adler forgot that “guerilla” is pronounced the same as its English homophone “gorilla.” Some ESPN viewers did not understand the guerrilla reference and charged that Adler was using “gorilla” as a racist smear. Adler tried to explain the reference, but he was fired and his career was ruined, making him a modern-day Cinna the poet, torn apart by the mob.

Why the linguistic McCarthyism? When a cowardly and self-righteous ESPN assumes the worst in people, it hopes to find protection for itself from the thought police. When chronic inner-city problems — epidemic levels of murder, drug use, and out-of-wedlock births — cannot be solved, frustrated progressives start looking for extraneous targets to blame. And so attention turns to, for example, an Andalusian horse — as if changing the animal’s name is at least proof that they care.

Most revolutions eat their own. Monday’s most fanatical revolutionary becomes a counterrevolutionary sellout by Tuesday. Once left-wing activists forced cities and states to pull down their politically incorrect statues in the dead of night, and once they got off scot-free in defacing and destroying publicly owned monuments, it was an easy step up to the next level: waging war against words themselves.

In totalitarian societies, cities change their names regularly. Statues go up and are torn down. Words, as the historian Thucydides warned 2,400 years ago, habitually change their meanings to reflect passing political orthodoxy — and thugs, commissars, and brownshirts oversee the charade. For an antidote to these statue-smashers and name-changers, Americans seek just one honest public official who dares to say “no more” — and arrests rather than appeases those who

destroy public property, or shames those who ruin people through guilt by association.

This article first appeared in the National Review of August 31, 2017. Victor Davis Hanson is the Martin and Illie Anderson Senior Fellow at the Hoover Institution; his focus is classics and military history. He has appeared over the years at various COLAB events in San Luis Obispo County.



ANNOUNCEMENTS

**THE
ANDY CALDWELL
SHOW**

The only local talk show to cover the entire Central Coast!


Central Coast Government watchdog, taxpayer, business and traditional values advocate Andy Caldwell interviews leaders and scholars on a variety of local, state and national issues.

Andy is Live Monday Thru Friday 3:00 PM to 5:00 PM

Call in 1-888-625-1440

Visit www.theandycaldwellshow.com for more information

Streaming Live on www.am1440.com and www.newspress.com



AM1440
KUHL® the information station

AM 1290
Santa Barbara News-Press Radio



Jon Coupal President • Howard
Jarvis Taxpayers Association

FALL Gather★ a gathering of ideas

September 23



Travis Allen • Republican
Assemblyman Huntington Beach

WHAT WE CAN DO TOGETHER TO FIGHT OVERTAXATION



Dedicated to Protect Prop 13



Since 1978 over \$528 Billion in Savings

What to Expect

Vigorous exchange of questions and responses
between Jon Coupal • Travis Allen and the
audience — you! Light refreshments

Where & When

Pavilion on the Lake
9315 Pismo Avenue • Atascadero
Saturday • September 23, 2017 3-6pm

RSVP • Cost • Donation • \$25 per person

Please RSVP by September 20, 2017
Click on Donation page at www.ccta.news
Note the number of people attending and donation



Assemblyman Travis Allen Files Ballot
Initiative to Repeal California Gas Tax
Increase



CENTRAL COAST TAXPAYERS ASSOCIATION

Central Coast Taxpayers Association • PO Box 89 • San Luis Obispo • CA 93406 • www.ccta.news

COLAB

Meet Me Halfway 2017

Featuring:
The American Comedy Award Winner
for Best Female Comedian

Wendy Liebman

Saturday, October 28, 2017

At the
Chumash Casino Resort

Reserve Seating for Ten Guests: \$900

Or \$90 per person

RSVP Early to Get the Best Seats!

Includes:

Steak Dinner by Martin Testa,
Hosted Bar and Dance Band!

Pay Online at www.colabsbc.org

Or By Mail:

COLAB
P.O. Box 7523
Santa Maria, CA 93456



SUPPORT COLAB!
PLEASE COMPLETE THE
MEMBERSHIP/DONATION FORM
ON THE NEXT PAGE



MIKE BROWN ADVOCATES BEFORE THE BOS



VICTOR DAVIS HANSON ADDRESSES A COLAB MIXER

Coalition of Labor, Agriculture and Business
San Luis Obispo County
"Your Property – Your Taxes – Our Future"
PO Box 13601 – San Luis Obispo, CA 93406 / Phone: 805.548-0340
Email: colabslo@gmail.com / Website: colabslo.org

MEMBERSHIP APPLICATION

MEMBERSHIP OPTIONS:

General Member: \$100 – \$249 ☐ \$ _____ Voting Member: \$250 – \$5,000 ☐ \$ _____

Sustaining Member: \$5,000 + ☐ \$ _____

(Sustaining Membership includes a table of 10 at the Annual Fundraiser Dinner)

General members will receive all COLAB updates and newsletters. Voting privileges are limited to Voting Members and Sustainable Members with one vote per membership.

MEMBER INFORMATION:

Name: _____

Company: _____

Address: _____

City: _____ State: _____ Zip: _____

Phone: _____ Fax: _____ Email: _____

How Did You Hear About COLAB?

Radio ☐ Internet ☐ Public Hearing ☐ Friend ☐

COLAB Member(s) / Sponsor(s): _____

NON MEMBER DONATION/CONTRIBUTION OPTION:

For those who choose not to join as a member but would like to support COLAB via a contribution/donation. I would like to contribute \$ _____ to COLAB and my check or credit card information is enclosed/provided.

Donations/Contributions do not require membership though it is encouraged in order to provide updates and information.

Memberships and donation will be kept confidential if that is your preference.

Confidential Donation/Contribution/Membership ☐

PAYMENT METHOD:

Check ☐ Visa ☐ MasterCard ☐ Discover ☐ Amex NOT accepted.

Cardholder Name: _____ Signature: _____

Card Number: _____ Exp Date: ____/____ Billing Zip Code: _____ CVV: _____

TODAY'S DATE: _____

(Revised 2/2017)