



COLAB

San Luis Obispo County

January 2014 Newsletter

Volume 4, Issue 1



THE COALITION OF LABOR,
AGRICULTURE, AND BUSINESS

COLAB

San Luis Obispo County

5th Annual DINNER FUNDRAISER 2014

Thursday, March 27, 2014

Alex Madonna Expo Center, San Luis Obispo

5:15 pm - Social Hour, No Host Cocktails

6:15 pm - Filet Mignon Dinner including Wine

\$125 per person / \$1100 per table of ten
Reserved seating for Tables of Ten

For tickets, mail your check to:
COLAB, PO Box 13601,
San Luis Obispo, CA 93406

For more information call: (805) 548-0340
or email to colabslo@gmail.com

**Remember to bring your ticket to enter in the
door prize drawing!**

Keynote Speaker

**Dr. Sam
Blakeslee**



The Honorable Dr. Sam Blakeslee founded the Institute for Advanced Technology and Public Policy at Cal Poly in 2012. With a portfolio of experience as a scientist, business owner and legislator, his goal is to bring these diverse worlds together with cross-disciplinary thinkers at Cal Poly to solve some of the most complex public policy challenges facing society today. Blakeslee was elected to the California State Assembly in 2005 and later to the State Senate. Elected by his fellow legislators, Blakeslee served as Assembly Minority Leader. In this role, he was a member of the "Big 5" with responsibility for negotiating the state budget and major policy initiatives. In 2009 and 2012, the Sacramento Bee identified Blakeslee as one of "Sacramento's Most Bipartisan Legislators."

Come join us in the celebration!

**Cocktail Attire Optional
(We still love those jeans too!)**

ENOUGH IS ENOUGH

There has been considerable dismay and outrage expressed throughout the community about San Luis Obispo County Supervisor Adam Hill's insulting and patently prejudiced letter published in the January 16, New Times weekly newspaper. He has once again demonstrated his lack of integrity by trying to escape responsibility with the excuse that the piece is "black humor."¹ Those who have followed the destructive swath of Hill's bullying career will recognize this pathetic excuse at once as similar to his attempt to evade responsibility for his impersonation by telephone of Pismo Beach City Councilman Ed Waage in an effort to intimidate a citizen with respect to a pending development matter. Similarly, he has bullied citizens with vicious threatening emails, has confronted colleagues on numerous occasions, has threatened radio hosts and news reporters, has threatened commentators with liable suits, and has accused COLAB of Santa Barbara County of being a racist organization.

The matter has become too toxic to be ignored by accepting the endless litany of fake apologies, transparent excuses, and the redemptive power of facial hair (the putative symbol of the January 2013 self-reported "kinder, gentler" Hill). The real question is: When will community leadership end Hill's embarrassing and disturbing reign?

1. When will the Supervisors publicly disavow Hill's behavior?
2. When will the San Luis Obispo County Democratic organization publicly disavow Hill and rescind its support?
3. When will the other elected leaders of cities and special districts within the 3rd Supervisorial district publicly disavow Hill's behavior?
4. How can Hill's appointees to powerful public bodies such as the Planning Commission live with themselves by representing such an arrogant and prejudiced representative?"
5. How long will the 3rd district voters allow Hill's disrespect of them and everybody else to continue?

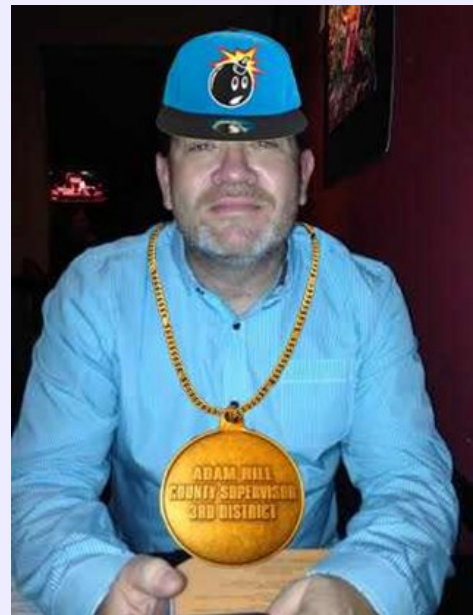
Silence and failure to act is acquiescence. Hill has gazed at himself in the "black mirror" (see the footnote to the right) and has seen the devil, and it is time for the devil to be exorcised. We quote Hill's article below:

Who is susceptible to conspiracy-theory thinking?

Adam Hill - San Luis Obispo County Supervisor, San Luis Obispo -

Not only the superficially educated and narrow-minded, not only bumpkins with bad breath and worse teeth, not only the gullible and aggrieved, not only those who are nostalgic for a past that never was, not only those who are afraid of losing control—the fire-breathers, the weapons-collectors, wearers of bespoke body armor, anonymous online trolls, lovers of Ayn Rand novels for whom the gift of literacy is truly wasted, not only the teacher's pets from cardio-prayer class, and the self-appointed scolds of free speech and the memorizers of parables about power ...

Continued on page 2 . . .



¹The term black humor (from the French humour noir) was coined by the [surrealist](#) theoretician [André Breton](#) in 1935,^{[7][8]} to designate a sub-genre of [comedy](#) and [satire](#)^{[9][10]} in which laughter arises from [cynicism](#) and [skepticism](#),^{[11][12]} often relying on topics such as [death](#).^{[12][13]} Breton was an associate of Leon Trotsky. By the end of World War II, André Breton decided to embrace anarchism explicitly. In 1952 Breton wrote "It was in the black mirror of anarchism that surrealism first recognized itself." ^[14] Breton was consistent in his support for the francophone [Anarchist Federation](#), and he continued to offer his solidarity after the Platformists around Fontenis transformed the FA into the Federation Communiste Libertaire. He was one of the few intellectuals who continued to offer his support to the FCL. Source: Wikipedia, January 23, 2014.

Hill Bullies Anyone Who Differs

Not only them, and not only the emotionally obese whose dreams are scarily self-tunneling and find themselves most alive when watching themselves rerun on the government channel late at night while wearing a human mask ...

Not only the sufferers of psychosomatic persecutions who use their cats as food tasters, not only the scavengers of propaganda, not only the depressed and bed-crazy, not only those who hear voices in other people's heads, not only the owners of 66 books on terror, not only those who crowd their homes with canned goods and medical salts, not only the connoisseurs of cartoon porn, not only those with ominous hair and gnawing vendettas against the IRS, not only proudly unregistered voters or voters registered to parties with serpents in their logo ...

Not only them, and not only the over-medicated who've barricaded themselves behind an alternative reality as a way to hide from their own damaged lives and turn to AM radio for the comforts of hate and heart-worming pet tales ...



And not only the adrift and the paranoid and the resentful, not only the rural white, not only the panicky liars, not only racists and anti-Semites, not only those who speak in spittled spurts about the Constitution, not only the no-longer-employable-work-from-homers, not only the smelling-impaired, not only those who would never donate their organs to strangers, not only defunct politicians, not only

the fanatics, not only those who fear world music ...

A Brilliant Rebuttal

The week following its publication, a reader, who doesn't even live in San Luis Obispo County perfectly, distilled the matter in a letter to the New Times editor:

“So if we're all like Hill, all will be well?”

Robert Smith - Lompoc . . .

I recently read Supervisor Adam Hill's 333-word letter to the editor ([“Who is susceptible to conspiracy-theory thinking?”](#) Jan. 16). It's astonishing that an elected representative would write such a condescending, demeaning, ill-informed, and extremely biased screed disguised as an indictment on “conspiracy theorists” (read conservatives).

The letter was nothing more than an implement with which to attempt to bully anyone with whom Mr. Hill has a difference of opinion, pretending to use his mastery of the English language and his clearly superior intellect, implying that anyone who doesn't share his views is “superficially educated and narrow-minded” (as opposed to his deep education and broad mindedness) and then broad mindedly describing them as “bumpkins with bad breath and worse teeth.”

It seems you're an idiot if you're nostalgic, as according to him, “it never was.” Reading Ayn Rand makes one a simpleton, yet I am sure Mr. Hill believes himself scholarly and well rounded. His reference to “cardio-prayer class” seems to be a veiled dismissal of Christian beliefs. Of course, only he and like thinkers are able to scold on free speech and power. In Mr. Hill's quest for open-mindedness, he believes his educational prowess has given him the right to dismiss the Bible (66 books on terror) and those who read it as beneath him. Apparently, he thinks it OK for the IRS to harass people based on their religious or political beliefs.

Basically, if we all were just as bigoted as Mr. Hill, all would be well. Bravo for your erudite, broadminded, spittle-free, rural white-less version of one-world-government thought, Mr. Hill.

Significantly, the New Times, which published the rant in the first place, negatively editorialized with a cartoon by Russell Hodin on January 23, 2014.



TRENDS FOR 2014

THREE THREATS TO OUR CIVIC PEACE AND PROSPERITY

The “Affordable” Health Care Act (Obama Care), the social equality movement, and the acceleration of the confiscation of private property in the name of the global warming crisis constitute the three main salients of the enviro-socialist plan to reorder American society. These themes Will become even more prominent in 2014. The three articles which follow detail the trends which will become unmistakable.

OBAMA CARE: THE TROJAN HORSE INSIDE THE WALLS

By: Michael F. Brown

Neither the Republicans nor the conservative media understand that, as far as the ultimate purpose of the Affordable Health Care Act (ACA or Obama Care) goes, its opponents have already been defeated. The television news hosts and radio talk show hosts are irrelevantly beating a dead policy horse. Notwithstanding all the technical problems and the likelihood that too few healthy younger people will enroll to cover the costs of sicker people, the key battles are lost. Even if the Act fails or some sections have to be suspended, redrafted, or abandoned, its real purpose has been achieved. On an operational level that purpose is the immediate extension of government funded and controlled health care to tens of millions of new dependent clients nationally under the expanded Medicaid provisions. (In California this could be 3 to 4 million alone, and in San Luis Obispo County, 11,000). Secondly, and also on the operational level, that purpose is to control private health insurance and extend the new mandated benefits and cost structure to tens of millions of uninsured and underinsured working people through the IRS-enforced insurance mandate. Parenthetically and as a harbinger of things to come, during a recent visit to my nearest IRS branch office, I noted that staffing included a uniformed, badge wearing, armed officer who greeted each “customer” and inquired about their purpose for visiting. I needed forms that they didn’t have and was told to order them on line. I wonder when there will be a policeman at my doctor’s office.

The more important and strategic public policy purpose is to geometrically expand both the functions of the national government while at the same time centralizing its control of health care, which represents 17.9% percent of the US gross domestic product (GDP). That percentage is expected to reach 20% next year. Not only are doctors and hospitals are being forced further into the federally controlled system, but

pharmaceutical companies, medical equipment manufacturers, suppliers of the vast array of medical consumables such as syringes, medical gases, diagnostic instruments and testing chemicals, packaging, bedding, orthopedic devices, and all the other impedimenta of the system will become more controlled by Federal fiat. The health insurance industry is now a part of State capitalism and will ultimately find that its profits and existence will require operational and political subservience to its government masters.

From the standpoint of the ACA’s more crafty and strategic proponents, the best thing that could happen is for it to fail and precipitate a massive social and economic crisis that can only be solved by complete centralization, price controls, and rationing. All key sectors of the economy that are involved in health care can be effectively nationalized as part to the emergency mobilization which would claim to be required. The emergency would be similar to the mobilization of industry under war production control boards during the two World Wars.

At this point the left need not worry. It wins either way. Having digested this victory, it has already opened the next major initiative – the social equality movement.

■



This article was prepared by Mike Brown, Governmental Affairs Director of the Coalition of Labor, Agriculture and Business of San Luis Obispo County. Brown has 42 years of state and local government experience.

SOCIAL EQUALITY: SOCIALISM EXPLICIT

By: Michael F. Brown

Social equality has been a central doctrine of various types of socialism since the French Revolution in 1789. The call for social equality is clearly the 3rd and next major strategic stage as the President and his enviro-socialist supporters work to transition America to a more collectivized society. The apparatus for controlling health care and the massive initiative to reduce greenhouse gases are already deployed. In 2014 the socialist program will no longer be disguised but will be presented as major public policy. During the State of the Union Speech on January 28, 2014, the President will propose a comprehensive and relentlessly expansive program to achieve social equality. During a speech in December 2013, the President asserted:

“... We need to set aside the belief that government cannot do anything about reducing inequality. It’s true that government cannot prevent all the downsides of the technological change and global competition that are out there right now -- and some of those forces are also some of the things that are helping us grow. And it’s also true that some programs in the past, like welfare before it was reformed, were sometimes poorly designed, created disincentives to work, but we’ve also seen how government action time and again can make an enormous difference in increasing opportunity and bolstering ladders into the middle class. Investments in education, laws establishing collective bargaining and a minimum wage -- (applause) -- these all contributed to rising standards of living for massive numbers of Americans.”

But what exactly underlies this offensive? Have the President and the Democratic Party been hijacked by the Socialist Party? What is the substantive policy difference between the President’s call for social equality and the following platform provision of the American Socialist Equality Party?

Immediate measures must be taken to promote social equality and a radical redistribution of wealth, including a progressive income tax that places the burden of taxation on the rich, while lowering taxes for the vast majority of the population. Taxes on the profits of all major corporations must also be sharply increased.

Is there any substantive difference between the Socialist philosophy stated below and what underlies the President’s rhetoric? The theory is that the rich have too much control and an unfair share of society’s wealth.

The apologists for capitalism claim that inequality is not related to the economic crisis, as if the withdrawal of trillions of dollars from productive use has no economic impact. The continual and insatiable drive of the financial aristocracy for more and more money has bankrupted the country and fueled one speculative binge after another. The same corporate CEOs who say they have no money to pay

decent wages and who carry out massive job cuts somehow manage to pay themselves and their top executives millions or even tens of millions of dollars every year.

Be prepared for sweeping legislation designed to both expand government and redistribute wealth. New proposed laws are likely to include:

- Aggressive and automatic minimum wage increases.
- Open admission to Universities and colleges and the rejection of merit as a basis for academic advancement (especially in public institutions). After all, reliance on grades and SAT scores is inherently unequal because they rely on an early grasp of the intellectual idea, memorization skills, test taking skills, how well you did in pre-calculus, IQ, and motivation, which are, in turn, at least partly derived from social class, income status, nutrition, family stability, cultural background, and other factors which are inherently unequal. Most of those straight-A, 1450 SAT score freshman at Berkeley come from advantaged homes where homework is practiced as a religion. Many entrants come from intergenerational Berkeley alumni families, where it is the kids’ prime duty during the first 17 years of life to perform academically, socially, and civically in ways to guarantee admission. It helps if one plays Chopin on the piano well, runs a very fast 440, and won the debate contest. God forbid if you only made it into UCSB.
- Free tuition at universities and colleges, especially state schools.
- Free pre-k nursery school for all.
- Forgiveness of all student debt.
- Conversion of stockholder owned utilities (electric, water, gas) into publicly owned and governed corporations.
- Prohibition of utilities shutting off service for nonpayment.
- Establishment of vast new public works construction programs including rail, light rail, high- speed intercity rail, dedicated bus ways, water projects, and infrastructure for smart growth.

Continued on page 5

- Expansion of housing subsidy programs.
- Massive new stack-and-pack community incentive programs that forbid freestanding single-family homes and force growth into concentrated urban and village centers.
- “Free” health care.
- Laws to mandate that private firms accept collective bargaining with unions in industries such as home care, hospitality, fast food, general retail, grounds keeping/maintenance, and clerical/office professional services.
- Harsh new regulations and fees on the fossil fuel industries, diesel engines, automobile emissions, and commuting by private vehicle.
- Final phase out and outlawing of nuclear power generation.
- Prohibition of desalination of seawater for public use.
- Point of sale HVAC, insulation, and window retrofit requirements on homeowners and business.
- Prohibition of the sale of foods and drinks that are regarded as containing too much sugar, salt, trans fats, or other “harmful” ingredients. Can red meat be far behind?

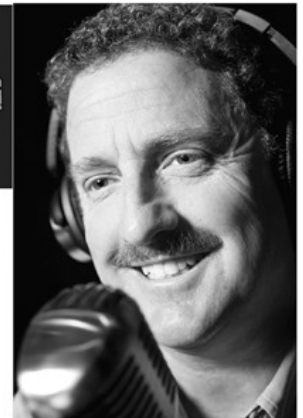
- Relentless steep and progressive tax increases on capital gains, ordinary personal income, inheritances, IRA proceeds, corporate income, health plan premiums, sales, real estate transactions, oil and gas extraction and transportation, hotel stays, gasoline, electricity, and water use.

As the Socialist Equality Party platform stipulates in its drive for social equality:

The expropriation of the rich is justified not only economically and politically, but also morally and legally. Balzac's adage that behind every great fortune stands a great crime is certainly true of today's aristocracy. From Enron to the subprime mortgage racket, so much of this wealth has been garnered through methods that have been thoroughly destructive and outright criminal. Yet only an insignificant handful of these corporate criminals have been held accountable, and those most culpable get off scot-free. The SEP advocates the investigation and prosecution of those involved in speculative activities and criminal misappropriation of social and corporate resources.

■

THE ANDY CALDWELL SHOW



The only local talk show to cover the entire Central Coast!

Central Coast Government watchdog, taxpayer, business and traditional values advocate Andy Caldwell interviews leaders and scholars on a variety of local, state and national issues.

Andy is Live Monday Thru Friday 3:00 PM to 5:00 PM

Call in 1-888-625-1440

Visit www.theandycaldwellshow.com for more information

Streaming Live on www.am1440.com and www.newspress.com

AM1440
KUHL • the information station

AM 1290
Santa Barbara News-Press Radio

ERADICATION OF PRIVATE PROPERTY COMES OUT OF THE CLOSET

By: Michael F. Brown

From a strategic policy standpoint, and in terms of its practical implementation, true social equality cannot exist in a society with privately owned property in land and permanent improvements. Private property conveys substantial advantages to its owner and often provides the means to remain insulated from and resist governmental encroachment. The despot butchers who created and led virtually all the totalitarian movements of the 20th century intrinsically understood this and sought to abolish or control it to achieve and maintain power. Kulaks in Russia, landlords and merchants in China, Jewish merchants and entrepreneurs in Germany (and its conquered territories), Armenian farmers and merchants in Turkey, rubber planters in Viet Nam, sugar planters in Cuba, and anyone who owned anything in Cambodia went to their deaths by the tens of millions. A quick historical perspective illustrates why private property was so threatening to the great despot equalizers. In fact throughout history, legal ownership of private property was extremely rare, and it is a relatively new development which has had a profound impact on human life and freedom.

As late as 1800, much of the world's grassland-----the North American prairies, the South American pampas, the Australian outback, the African savannah-----was still communally owned by indigenous peoples. The most extensive single pattern of land ownership was the feudal monstrosity of the serf estate that reached with the Russian Empire from the Baltic to the Pacific. The majority of the world's population, however, understood land ownership to take various forms of peasant farming. In much of Europe, India, and in China, the most populous and powerful nation in the world until the late eighteenth century, peasants worked the ground and owned its produce, but ownership of each small plot was shared, with a family or a clan, with a local potentate, or with the monarch. And in the whole wide swath of Islamic states from North Africa to Java, peasants worked, and landlords possessed, but ultimately the earth belonged to its creator.

The disruption of this pattern is the great revolution of the last two hundred years. The idea of individual, exclusive ownership, not just of what can be carried or occupied, but of the immovable, the near- eternal earth, has proved to be the most destructive and creative cultural force in written history. It has eliminated ancient civilizations wherever it has encountered them, and displaced entire peoples from

their homelands, but it has spread an undreamed-of degree of personal freedom and protected it with democratic institutions wherever it has taken hold.¹

In this country, in the past it was believed (and demonstrated) by generations of immigrants and native-born Americans that with hard work, sobriety, thrift, and adherence to family values, individuals and families would advance their economic and social position. In doing so, they could acquire and own property from which they could not be dispossessed by government without just compensation determined in a court of law. Now, and thankfully, even though the Red Guards, Einsatzgruppen, or Khmer Rouge aren't knocking on your door yet, a more subtle and gradual expropriation is taking place every day.

This enviro-socialist assault on private property in the form of land and real estate has been somewhat camouflaged in four ways. The first, and longest running, has been the gradual expansion of planning and zoning controls (and costs) over the past five decades. The second is the insertion of a growing variety of environmental criteria and restrictions into the land use regulatory process since the 1970's. Many of these were designed to reduce water and air pollution and to help preserve species, protect open space, and generally enhance the built environment. While both of these have been beneficial in many ways, they have also added significant costs to the entitlement process and restricted available land (particularly for houses) and thereby have driven the cost of a home well beyond the reach of the average family in many urbanized parts of the country. Unfortunately, radical anti-development and anti-private property environmental groups as well as government organizations have exploited these requirements to legally attack many projects. This has been particularly true in California and the northeast.

The fourth and newest of the assaults comes, of course, from the theory that human-caused global warming will result in climate changes which endanger agriculture, air quality, and coastal cities, and which may ultimately (in the apocalyptic vision) threaten the entire biosphere and life itself.

¹ Linklater, Andro; *Owning the Earth: The Transforming History of Land Ownership*, Bloomsbury, NY, 2013.

Continued on page 7 . . .

Thus far (and except for some of the more strident global warming priests) these assaults have been justified as needed to provide orderly urban development, protect nature, promote efficient transportation, and otherwise prevent harmful impacts of bad development. Except for their pernicious impact on home costs and rents, they have generally been regarded as successful. More subtly, they have eroded private property rights by reducing their scope and making it much more costly to obtain development entitlements.

They have also caused considerable land to be shifted to the public domain (or land trusts) in the form of exactions and “donations” which are required in order to obtain development permits. Simultaneously (and perhaps carefully) most proponents, interest groups and government officials have refrained from attacking the institution of private property directly (land and permanent fixtures upon the land) until now. This is about to change.

We expect that we will see more and more academicians, bureaucrats, and elected officials openly advocating major

diminution of private property rights in 2014. At this point, many feel that they are immune from public control and invulnerable. Some of the undisguised claims will include:

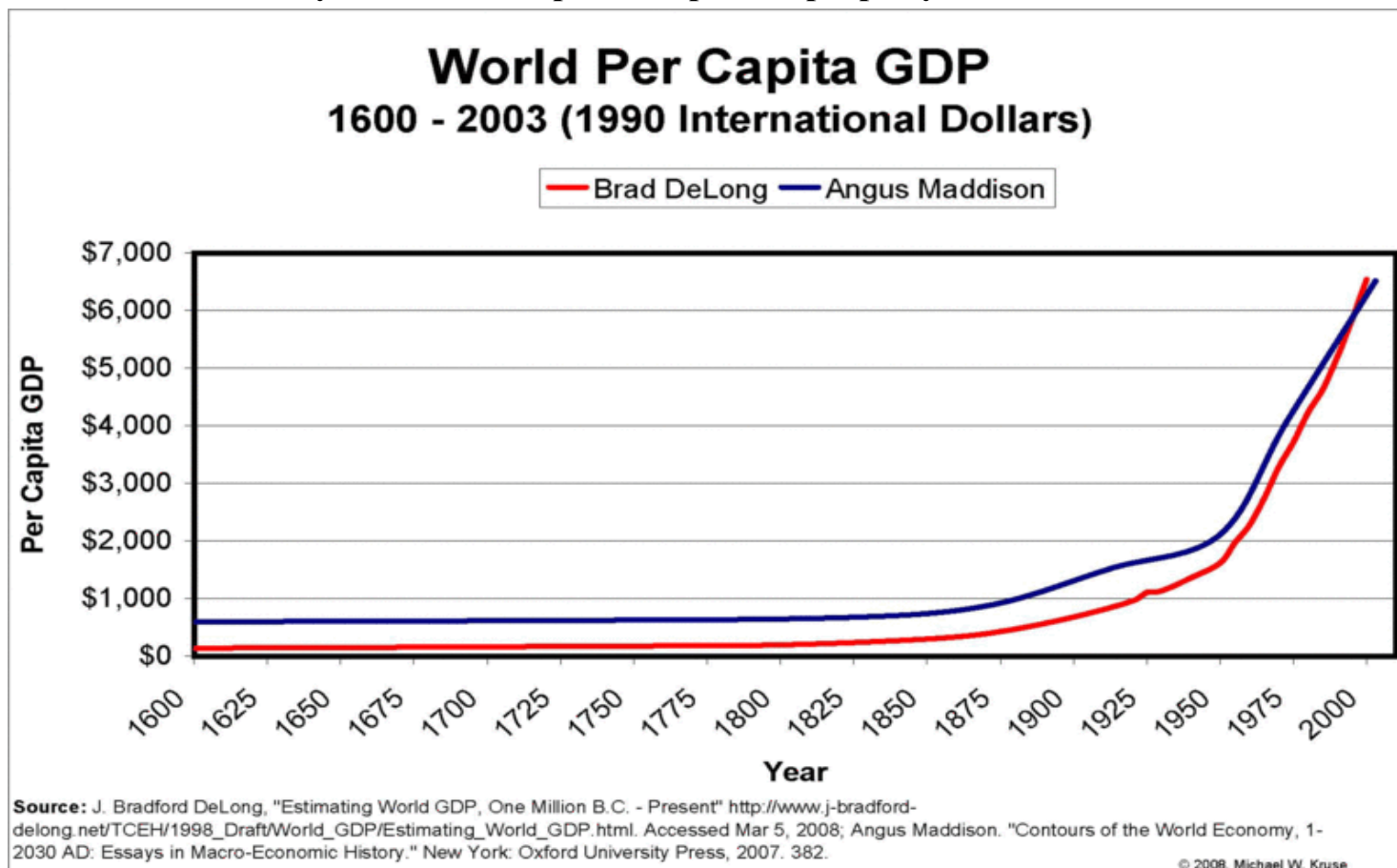
All property in especially “valuable” zones such as coastal zones, agricultural zones, and next to rivers and other water bodies will be treated as subject to permanent public protection and being at the service of the economic and social well- being of the people.

Private property in the core of denser cities should be owned by the city or non- profit land trusts so that city residents benefit from the profits it generates rather than having those profits exported to outsiders (like real estate company stockholders.

There will be increased pressure to eliminate constitutional limits on the property tax.

■

Note that the World Per Capita GDP Chart demonstrates that gross domestic product was essentially flat until the spread of private property around the 1770’s.



MEMBERSHIP APPLICATION

MEMBERSHIP OPTIONS:

General Member: \$100 – \$249 q \$ _____ **Voting Member: \$250 - \$5,000 q \$ _____**

Sustaining Member: \$5,000 +q \$ _____

(Sustaining Membership includes a table of 10 at the Annual Fundraiser Dinner)

General members will receive all COLAB updates and newsletters. Voting privileges are limited to Voting Members and Sustainable Members with one vote per membership.

MEMBER INFORMATION:

Name: _____

Company: _____

Address: _____

City: _____ State: _____ Zip: _____

Phone: _____ Fax: _____ Email: _____

How Did You Hear About COLAB?

Radio q Internet q Public Hearing q Friend q

COLAB Member(s) /Sponsor(s): _____

NON MEMBER DONATION/CONTRIBUTION OPTION:

For those who choose not to join as a member but would like to support COLAB via a contribution/donation.

I would like to contribute \$ _____ to COLAB and my check or credit card information is enclosed/provided.

Donations/Contributions do not require membership though it is encouraged in order to provide updates and information.

Memberships and donation will be kept confidential if that is your preference.

Confidential Donation/Contribution/Membership q

PAYMENT METHOD:

Check q Visa q MasterCard q Discover q Amex NOT accepted.

Cardholder Name: _____ Signature: _____

Card Number: _____ Expiration Date: _____ Billing Zip Code: _____

TODAY'S DATE: _____



COLAB

San Luis Obispo County

P.O. Box 13601
San Luis Obispo, CA 93406

DONATE!

We need and appreciate your support!

Help COLAB protect your property rights!

COLAB's mission is to promote the common business interests of its members by providing information and education on issues which have or may have an impact on its membership.

To achieve its mission, COLAB will engage in political activities which promote those common business interests and, in doing so, foster a positive image for agriculture, business, and labor in the community. COLAB represents its members before the SLO County Board of Supervisors and any other local or national governing body. If necessary, we will take legal or administrative action for the mutual benefit of the members.

COLAB is a 501 ©(6) non-profit organization. However, by law your donation is not tax deductible.

**You may donate by
sending a check to this address:**
PO Box 13601, San Luis Obispo, CA 93406



COLAB

San Luis Obispo County